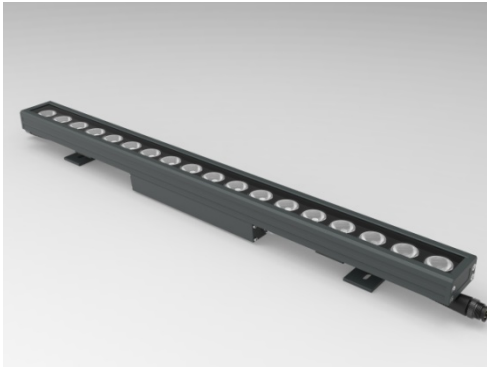


WA042 wall washer

Description

WA042 wall washer it is a high-power SMD LED strip product designed for outdoor landscape lighting. It adopts aviation grade 6063 extruded aluminum shell, flame-retardant plastic PC end cover, and is sealed and sealed by high thermal conductivity and weather-resistant PU glue; it can be used to outline the building, the wall is brightened, and the inner and outer surfaces are brightly decorated; the length of the wall washer can be customized. The installation method is flexible and simple.

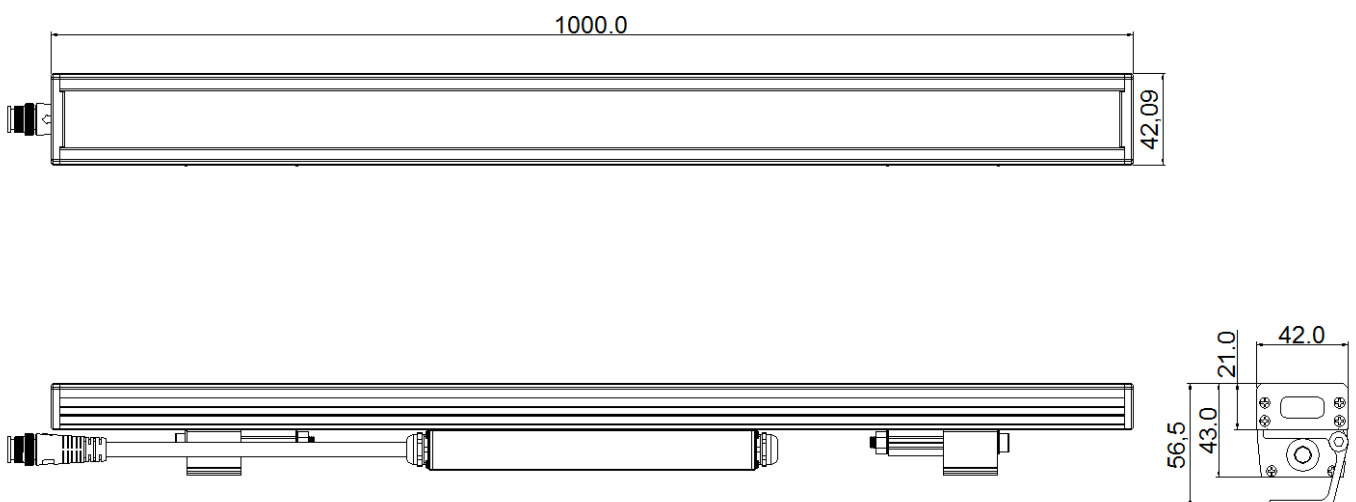


Features :

- ★ Standard DMX512 Control Protocol
- ★ Industry-leading wireless button-type anti-smash connection design
- ★ High thermal conductivity glue full potting waterproof design
- ★ Outdoor lightning protection and Electrostatic (ESD) special protection design
- ★ The product adopts the original adjustable mounting bracket design
- ★ Support RGB/W current separately adjustable (low light and high gray)

Application environment: indoor, outdoor

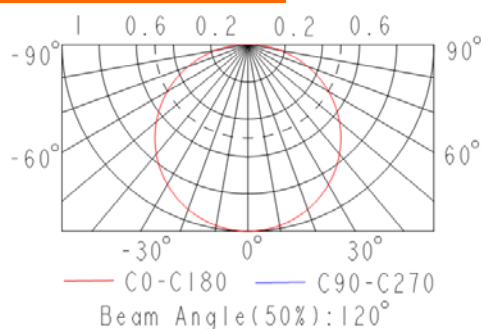
Measurement (Unit:mm)



Technical Parameters

Basic parameters			
Color/gray	Monochrome □ RGB/W each 65536 grayscale;		
Light source	High power 2525 / 3535 / 5050 / 3030	LED quantities	18-36pcs (0.25m-1m, Length can be customized as required)
Material	Sprayed aluminum housing + optical glass cover		
Lifespan	50,000h	Weight	1 □ 76Kg/m
Optical parameters			
Operating Voltage	DC24V / 36V	Maximum power	18-54W/m
RGB Light intensity	2700LM/m	White light	3500LM/m
Beam angle	15° / 30° / 45° / 60° / 10°x65° / 20°x65° / 20°x45°	Electric grade	Class III
Other parameters			
Operating temperature	-20°C to 50°C	Storage temperature	-40°C to 70°C
Protection level	IP66		

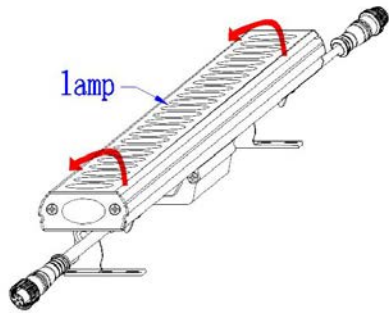
Light distribution curve



Product selection table

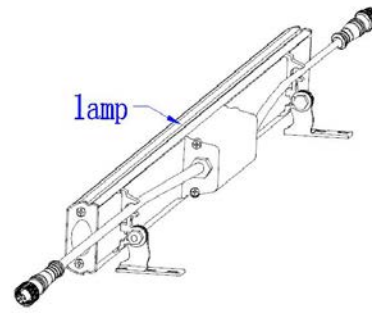
Model	Light source quantities	Light source	Color	Control	DC Operating Voltage	Power	White light light intensity
WA042-18WD	18 PCS	3030 3535 (High power)	RGB/W	DMX512	24V	18W	1260LM
WA042-18WN	18 PCS	3030	W	No control	24V	18W	1260LM
WA042-24WD	24 PCS	3030 3535 (High power)	RGB/W	DMX512	24V	24W	1700LM
WA042-24WN	24 PCS	3030	W	No control	24V	24W	1700LM
WA042-54WD	36 PCS	3535	RGB/W	DMX512	24V/36V	36-54W	2700LM
WA042-48WD	36 PCS	3030 3535 (High power)	W	DMX512	24V/36V	36-48W	3500LM
WA042-36WN	36 PCS	3030	W	No control	24V/36V	36W	2500cd

Angle adjustable mounting bracket installation:



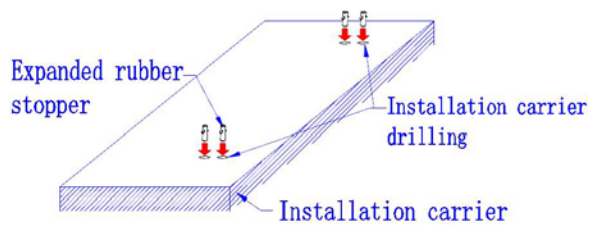
① Loose lamp bracket screw and angle rotation:

Take out the lamp and loosen the angle adjustment screw on the lamp bracket, then rotate the lamp body to the other side of the mounting hole to facilitate the installation of the lamp.



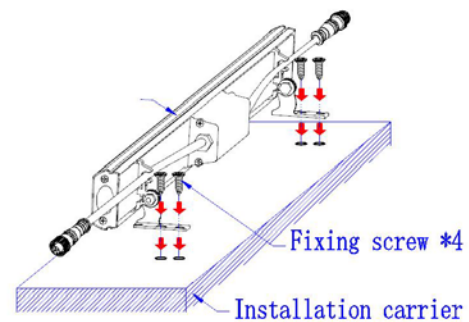
② Rotate the lamp body:

Loosen the angle adjustment screw and rotate the lamp after the lamp body (as shown), and wait for the subsequent installation work;



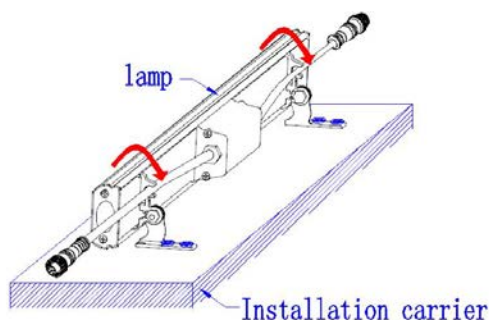
③ Drill the holes on the carrier and install the expansion rubber plug:

Mark the hole on the carrier according to the mounting hole of the lamp and drill it (6mm drill bit is recommended); in the drilling position, knock the expansion rubber plug into the carrier bore with a hammer (Note: the rubber plug should not be loose);



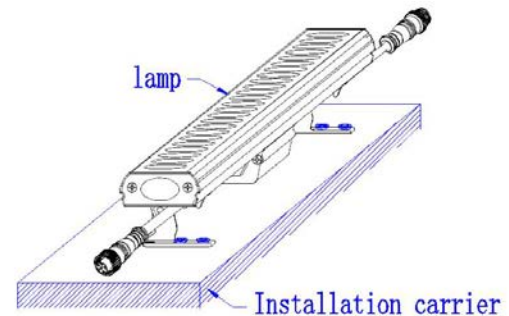
④ Fixing the fixture:

Align the mounting holes of the lamp with the mounting hole of the mounting carrier, and lock the lamp with screws. The lamp bracket should not be loose;



⑤ The lamp adjusts the angle as required:

After the lamp is installed and fixed, adjust the angle of the lamp to the best angle required by the project, and tighten the angle adjustment screw, the lamp body and the lamp should not be loose;



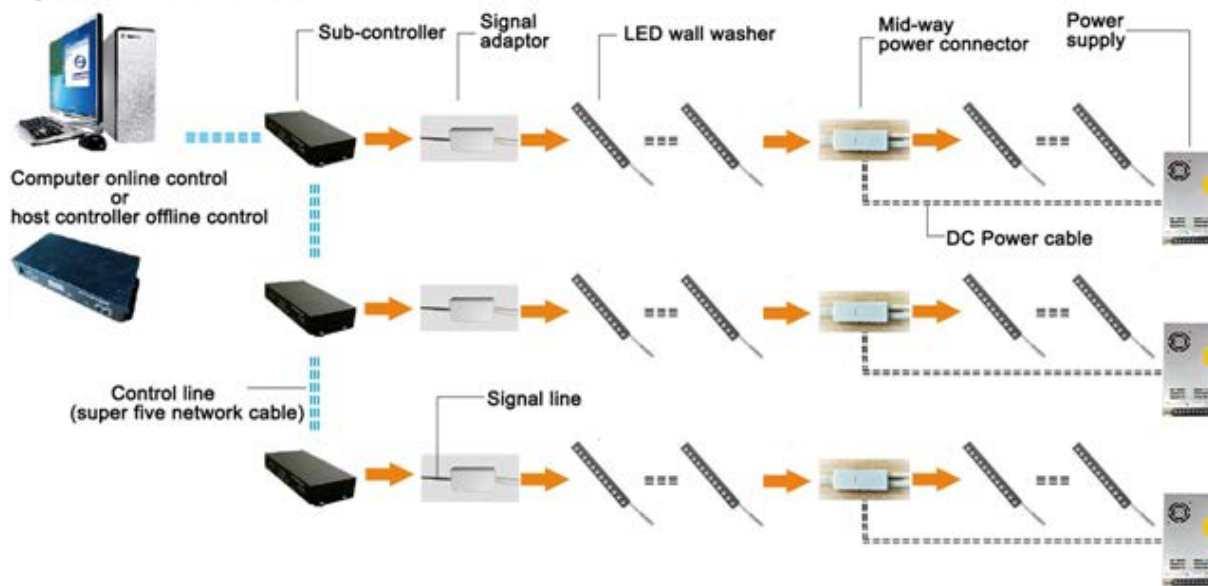
⑥ The installation is completed:

Fix the fixtures and check that they are securely installed. Waiting for cable connecting. as the picture shows:

System connection

- 1、 The main controller is equipped with sub-controller and signal adaptor. The main control and sub-control working voltage is AC220V. The working voltage of the signal adaptor is the same as the working voltage of the pixel light.
- 2、 Each sub-controller has 8 ports. The TTL sub-controller can carry 512 (RGB) pixels per port. The DMX sub-controller can carry 170 (RGB) pixels per port. It is used with the signal adaptor and supports 200 meters long distance transmission.
- 3、 The main control and sub-control, sub-control and sub-control are connected by CAT5 twisted cables, the maximum distance of each section is less than 120 meters; the maximum transmission distance between the sub-controller and the signal adaptor is less than 120 meters. In this case, the maximum distance from the signal adaptor to the first pixel light is no more than 2 meters.
- 4、 It is recommended that the maximum point spacing should not exceed 2.5 meters, and each intermediate power supply can support the power supply distance of 6 meters left and right (can be adjusted according to the project conditions).

System schematic



Control system	TTL Dual channel real-time backup	DMX512
Main controller		SGY-318
Sub controller		SGY-218DW
Signal adaptor		
Signal adaptor		AD-001 Differential signal adaptor
Signal cable		Two-core shielded wire, three-core shielded wire

Notes:

1. Please read the installation manual carefully before using the product.
2. The product is handled gently and gently to avoid damage to the product. Installation, maintenance and maintenance must be handled by professionals;
3. The external power supply must be cut off during wiring to prevent people from getting an electric shock or damaging the lamp;
4. When the external power cord is connected, the corresponding measures of waterproofing and water leakage must be taken;
5. The male and female waterproof protective covers for the products shall not be removed before the products are installed and connected;
6. Quality Assurance: Under normal conditions of use, quality assurance is based on the proper storage, installation, use and maintenance of the product.

(Note: Product damage caused by improper installation and use, in violation of product operating procedures, is not within the scope of product quality assurance.)