

180 Lm/W



# SLIM MAX

## LED HIGH MAST FLOOD LIGHT

LSHM-600W-LV(XXX)MAX-B

LSHM-720W-LV(XXX)MAX

LSHM-900W-(XXX)MAX

# 600W 720W 900W

For area lighting for applications:

Airports, Golf course | Sport Fields | Stadiums|

Shopping Centers | Prisons | Expressways |

Industrial Facilities and Railway Terminals etc.



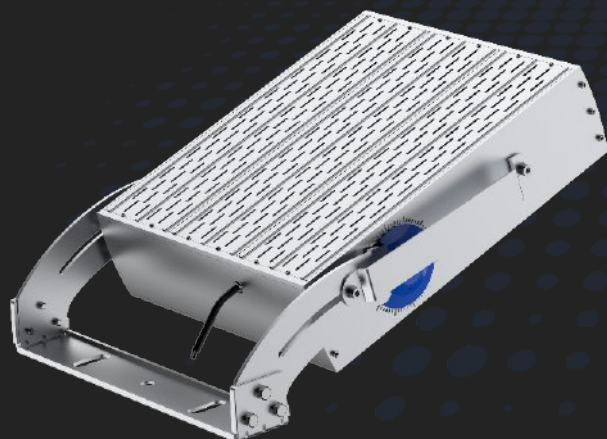
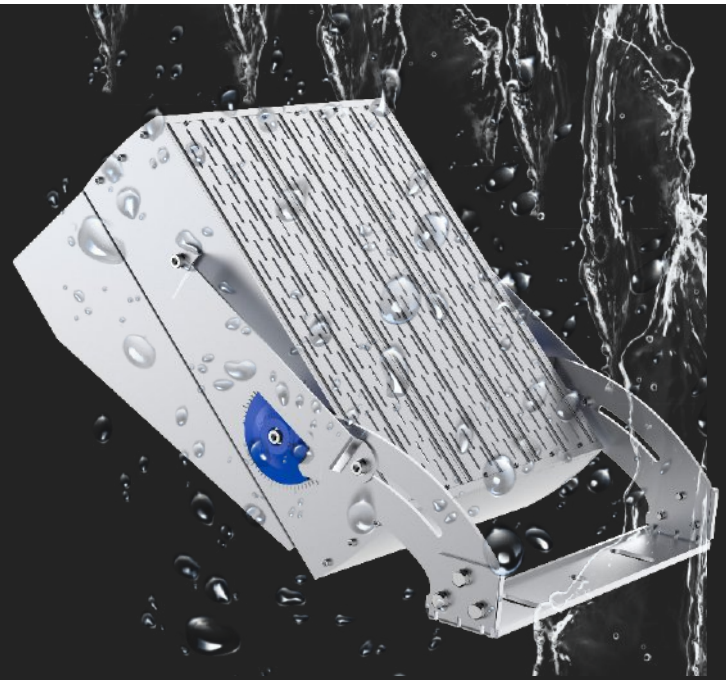


## SLIM MAX SERIES

SLIM MAX series LED HIGH MAST LIGHT is built with robust Folding aluminum fin module housing and heavy duty anticorrosive surface treatment for sparking the beauty and improving lighting conditions of applied area. Originated by the demand for large field lighting applications, SLIM MAX series flood lights can be extended to 1500W and fixture efficacy reaches to 170LM, better brilliance, less energy consumption.

## IP66 WATERPROOF & IK10

1. High luminaire efficiency up to 180lm/w
2. Marine grade aluminum housing
3. IP66 and IK10 protection rate
4. 5 years warranty



## Folding aluminum fin design

Folding aluminum fin design which are very light weight. Increase the heat dissipation surface area by air cooling to dissipate heat and expand the contact area with air! It speeds up the spread of heat! Thermal effect is good! Compared with traditional die-cast aluminum and profile aluminum, which is heavier and there are certain safety risks. On the contrary, the aluminum fin heat sink are more secure.

# SLIM MAX SERIES LED HIGH MAST LIGHT



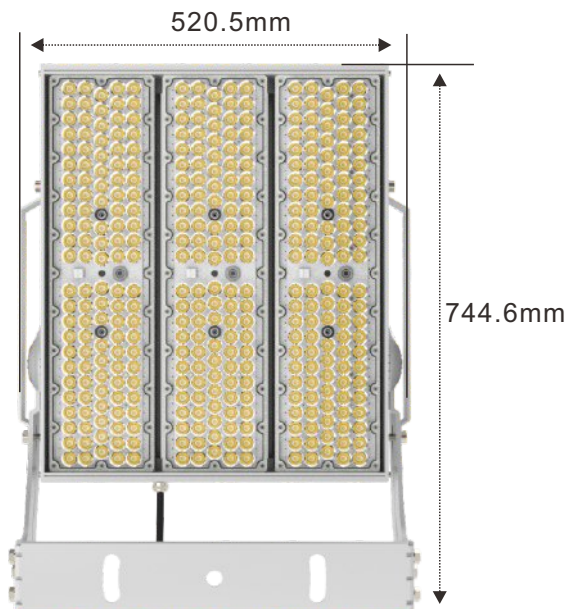
## ▼ Features

1. High luminaire efficiency up to 180lm/w
2. Marine grade aluminum housing
3. IP66 and IK10 protection rate
4. 5 years warranty
5. Non-flickering drivers
6. Folding aluminum fin design which are very light weight
7. TUV CE CB SAA RoHS LM79 LM80 TM21 IK10 Salt Spray test approved

**5**  
Years  
Warranty

**50000**  
Hour  
Long Service Life

## ▼ Dimension



# SLIM MAX

## LED HIGH MAST LIGHTS

- Light Source: Luminleds 5050
- Input Volt: 100-277VAC
- IP Rating IK Rating : IP66 & IK10
- Beam Angle: 10° 20° 40° 60° 90° Type4 135\*60° (P50)
- Color Temp: 3000K 4000K 5000K 5700K 6000K
- 5 years warranty



Anti-glare plate



100-277V



347-480V



50,000H



360°  
Modules



-30~45°C



IK10



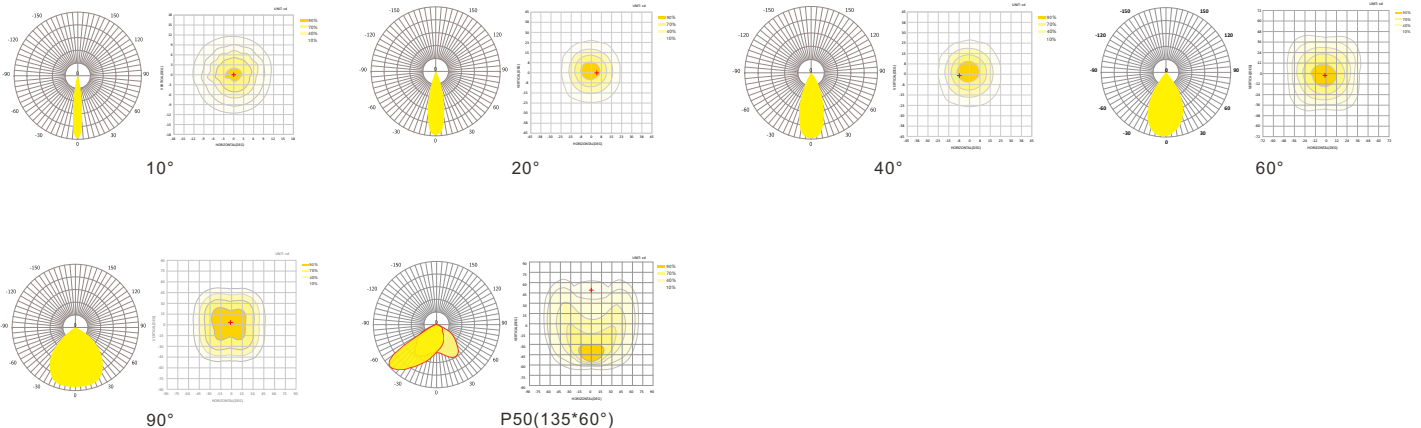
IP66



### Technical Specifications

Part Number	LSHM-600W-LV(XXK)MAX-B	LSHM-720W-(XXK)MAX	LSHM-900W-(XXK)MAX
Watt	600W	720W	900W
Efficiency	180LM/W±3%	170LM/W±3%	160LM/W±3%
Chip Brand	Luminleds 5050	Luminleds 5050	Luminleds 5050
Lumen	108,000Lm	122,400Lm	144,000Lm
Driver	Meanwell Driver 3*ELG-240-48A	Meanwell Driver 3*ELGC-300-H-A	Meanwell Driver 3*ELGC-300-H-A
Dimensions	520.5x744.6x147mm	520.5x744.6x147mm	520.5x744.6x147mm
Weight	13KG	18KG	19.5KG

### Beam Angle



## Application



Wharf Lighting



Airport Lighting



Golf Lighting



Stadium Lighting

For area lighting for interior and exterior applications:

airport, golf course, factories, plants, warehouse, exhibition halls, gym, seaport, highway, high mast lighting and etc.

## Installation



Wall Installation



Ground Installation



Pole Installation

## Package details

Wattage	Size of Box	Weight	Box Quantity
600/720W / 900W	82x60x22cm	22Kg	1PC